

Professional Sprayers – User’s Manual



135 Region South Drive,
Region South Industrial Park,
Jackson, GA 30233

I. SAFETY PRECAUTIONS:

- A. Do NOT change spray patterns while pulling the trigger. This will cause some material to eject out the back of the tip (Adjusta-Tips).
- B. Be careful not to overpressurize the tank above 50 psi.
- C. Do not pressurize with any gas.
- D. Open cap slowly to allow any tank pressure to release before removing cap.
- E. Keep tank upright when releasing pressure.
- F. Do not store or transport the sprayer while under pressure.
- G. Be careful not to insert the AeroTip into voids containing electrical current such as around electrical outlets. The internal portion of the AeroTip is metal which can conduct electricity and the liquid being applied can also conduct electricity back to the user.
- H. Keep the black plastic sleeve over the AeroTip in good repair without torn areas to help reduce risk of electrical shock.

II. SUGGESTED USES: B&G offers a complete line of sprayers, discharge valves/guns, tank options, and accessories designed for all types of professional uses. Our sprayers can be used to deliver a variety of chemicals for all types of spraying, including outdoor perimeter treatments and indoor applications. B&G stainless steel tanks are corrosion resistant and durable. The seams, collars, and syphon tube fittings are all welded for maximum strength.

III. BEFORE YOU START:

A. Pressurizing the Tank: Inspect the hose, tank gasket, and the pump tube check valve for signs of wear or degradation. These parts must be free from damage to permit tank pressurization. Screw on the complete pump tube assembly tightly. Disengage handle from locked position by pushing down and turning 1/4 turn counter-clockwise to release handle. Pump plunger up and down until desired pressure for the application is achieved. Engage handle to locked position. It is recommended that this compressed-air sprayer be used with a pressure gauge (B&G part #AG-3) fitted to the tank and a pressure regulator (B&G part #460) fitted to the spray gun/lance.

B. Adjusting Pressure: The standard B&G 460 Pressure Regulator Kit is standard with some models and can be upgraded on all models. The AeroTip, crack and crevice straws, and the fan sprays were all designed to function best at 20 psi. More pressure will cause excess overspray onto non-target surfaces. Adjust the Pressure Regulator while spraying material through the gun to 20 psi open flow pressure.

C. Rates at 20 psi (oz/min):

50° Coarse Fan= 14.08; 80° Fine Fan=6.40;
Pin=8.96; AeroTip = 1017.

IV. OPERATING INSTRUCTIONS:

A. Filling and Mixing:

- 1) Mix all materials according to label directions for each chemical.
- 2) If mixing materials in tank, first add 1/3 - 1/2 of the water
- 3) Add the chemical
- 4) Replace pump/cap assembly, tighten and shake tank
- 5) Remove closure & add remaining water needed (note gal. or liter marks on side of the tank)

- 6) Replace pump/cap assembly, tighten and shake well
- 7) For Wettable Powders and other formulations that do not remain in suspension well, shake frequently between spraying periods.

B. Securing the Cap:

- 1) Replace the cap (be sure the pump tube is secure and the gasket fits comfortably).
- 2) Tighten the cap until snug - do not overtighten.

V. CARE AND MAINTENANCE:

A. Ongoing Maintenance:

- 1) Empty the tank and drain the lines after each days use.
- 2) Carefully inspect all gaskets and hose, as well as all other fittings for wear - replace when necessary.

B. Flushing The System:

- 1) After rinsing the tank with clean water a few times, pressurize the tank with clean water and flush out the valve and lines at least once per week.

C. Cleaning Clogged Fan and Pin Streams:

- 1) Do not insert metal objects into the tip orifices - this will greatly damage your pattern.
- 2) Clean with a soft bristle brush such as a toothbrush to free clogs.
- 3) Cleaning detergents or solvents can be used to soak the tip (do not use ammonia - it can corrode brass)

D. Cleaning Clogged AeroTip Straw:

- 1) DO NOT INSERT METAL OBJECTS INTO THE AEROTIP!!! This straw is made up of very small, precisely machined components that will be damaged to the point of not functioning at all.
- 2) Run hot water over and into the straw.
- 3) Soak the straw in hot, soapy water.
- 4) Blow compressed air through the back of the straw.

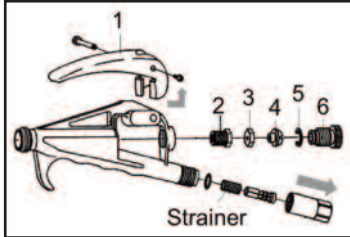
E. Maintenance for Adjusta-Tip:

- 1) For sprayer models with Adjusta-Tips, the assembly may need to be disassembled occasionally in order to stretch or replace the spring.
- 2) Hold the large knurled body with your hand and the flat areas on the side of the smaller 4-way tip with a wrench (do not hold the knurled body with a wrench).
- 3) Remove the 4-way tip and Tip cap from the Adjusta-Tip body housing.
- 4) Remove the Seat Follower assembly with O-rings from the housing
- 5) Either replace or periodically stretch the spring inside the housing.

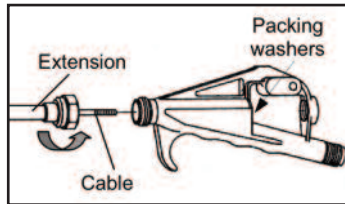
SYMPTOM	SOLUTION(S)
Tank not holding pressure	• Tighten cap (P-274) • Replace tank gasket (P-268)
Tank not getting pressure	• Replace polypropylene cup (NP-277) • Replace or oil leather cup (NP-271)
Cylinder filling up with liquid	• Clean dirt/chemical from under check valve (PV -266) • Replace check valve (PV -266)
Holds pressure - won't spray	• Tip clogged - clean (w/soft bristle brush only) • Cracked syphon rube - replace • Syphon rube clogged - clean • Clean strainer (MS-145) with water
Hose leaks	• Replace hose
Hose leaks near fittings	• Replace/Install Teflon™ washer (D-51-P)
Hose clogged	• Clean system each night • Don't leave pressure in tank overnight
Valve body leaking	• Extenda-Ban - Tighten packing nut (PN-150 - old units) - Replace valve packing (VP-151) or new seal nut • Trigger Teejet - Replace Buna O-Ring (I) - Tighten cap (4578) • Ban Drip - Tighten packing nut (PN-47) - Replace rod packing (RP-48)
Tip leaking	• Extenda-Ban - Replace or clean soft seat gasket (SP-159) - Replace valve spring (VS-156) • Ban Drip - Straighten and tighten tip (4596) - Replace seat gasket (TSG-51) - Clean dirt from seat gasket (SGH-50) - Replace Tod spring (RS-49) • Trigger Teejet - Tighten tip cap (1325)
Adjusta-Tip: Leaking Out Back of Tip When Changing Patterns	• Do not index while spraying • Replace Spring (#5946) • Replace Teflon gasket (#24010026) • Tighten retainer by holding ring and tip w/two wrenches
Adjusta-Tip: Leaking Out Back of Tip When NOT Changing Patterns	• Tighten retainer ring by holding the ring in hand and tightening the tip with a wrench. • Tighten tip or replace tighten soft seat gasket (#SP-159) • Replace Teflon gasket (#24010026) • Chamber is full of liquid when pulling trigger while indexing - liquid needs to drain.
Adjusta-Tip: Leaking Out From While Spraying	• Release trigger to let O-ring reseat to back of tip • Replace spring (#S-5945) • Replace seals (#OR-5942, #OR-5943) • Tighten retainer ring by holding the ring in hand and tightening the tip with a wrench.

EXTENDA-BAN VALVE REPAIR AND MAINTENANCE

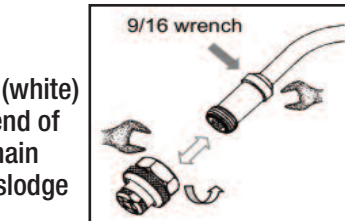
1 Detach the Valve and Extension from the hose. Carefully remove the mesh strainer. Squeeze the Trigger to drain all liquid from the Valve.



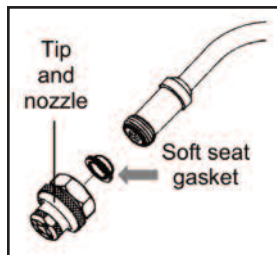
2 Remove the Trigger (1), then the Snap ring (5), Safety lock nut (6), the Adjustment screw (4), the Lock nut (3), and then the Packing nut (2). The Trigger can be removed by moving it to the back of the Valve.



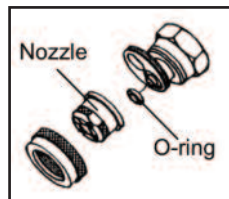
3 Unscrew the extension at the front of the valve. The extension can be pulled away from the valve along with the interior steel cable.



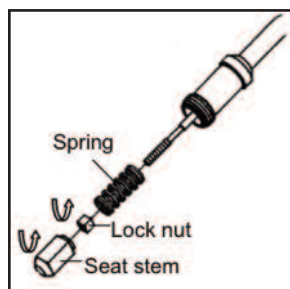
4 Packing washers (white) that were at the end of the cable will remain inside the valve. Carefully dislodge and remove these washers.



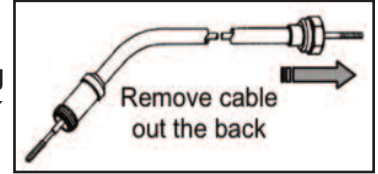
5 Remove the tip and nozzle assembly from the end of the extension, be careful to keep the Soft seat gasket. **Use 2 wrenches to loosen the tip:** one to hold the extension, and a second to loosen the tip. **Note: the extension may become twisted and unusable unless 2 wrenches are used to remove the tip.** Inspect the soft seat gasket and the small O-ring on Multeejet tips, replace if damaged or worn. Replace the nozzle if it is more than 2 years old.



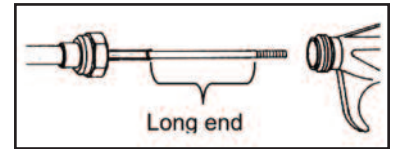
6 Push the cable out the front of the Extension to expose the Spring, the small Lock nut, and the Seat stem. Unscrew the Seat stem and Lock nut, and slide off the Spring. Place these small pieces in a closed container (they are easily misplaced).



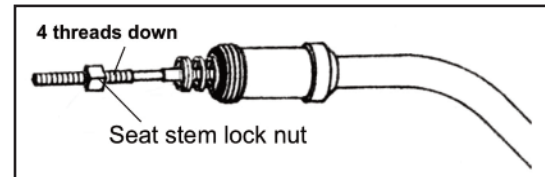
7 Remove the stainless steel cable by pulling it slowly through the **back end of the Extension** – you cannot pull the cable through the front of the Extension. The threaded end of the cable at the nozzle end is short and easily passes through the curve in the Extension. The end of the cable at the valve end is long and will not pass through the curve. Replace the cable if it is worn or damaged.



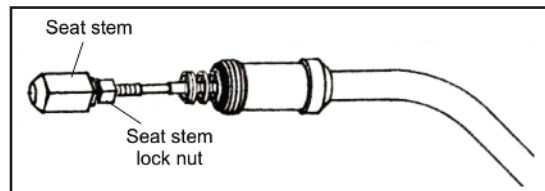
8 Re-assemble the Extension by inserting the short end of the cable into the back so that threads are exposed at the nozzle end.



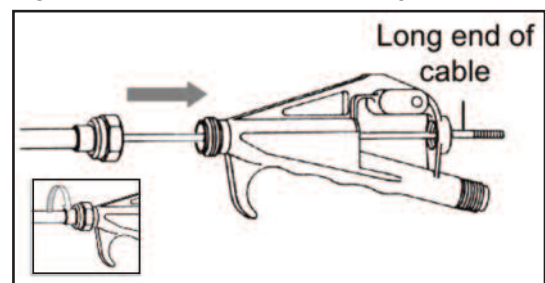
9 Slide the Spring onto the end of the cable, then the Seat stem lock nut. Screw lock nut to leave **about 4 threads** at the base of the end of the cable.



10 Attach the Seat stem onto the cable, in front of the Lock nut. Hand tighten Seat stem against the lock nut.

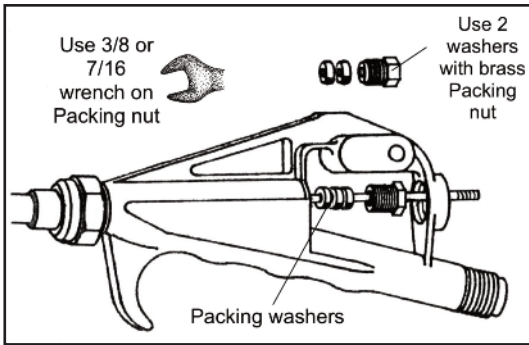


11 Insert the long end of the cable into the front end of the valve. Push the cable through the valve until the end is through the back of the valve. Tighten Extension to the valve body.



12

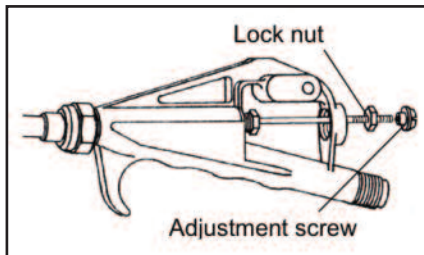
Insert 2 or 3 Packing washers onto the cable, then slide on the Packing nut behind the washers and tighten.



- Valves built **before 1999** have a stainless steel Packing nut that takes 3/8 wrench, there is no internal O-ring, these valves need 3 washers.
- Valves built **between 1999 and 2000** have a brass Packing nut + O-ring, this nut takes a 7/16 wrench, these valves need 2 washers.
- Valves built **after 2000** have a stainless steel Packing nut + O-ring, this nut takes a 3/8 wrench, and these valves require 3 washers.

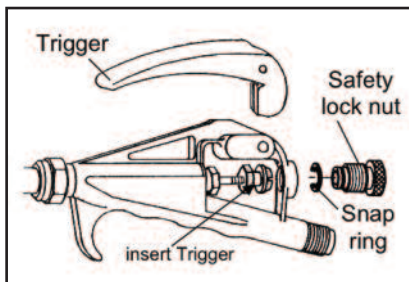
13

Screw onto the cable the Lock nut and the Adjustment screw. Turn the Adjustment screw so the end of the cable is level to the top of the slot in the top of the screw. Tighten the Lock nut against the screw.



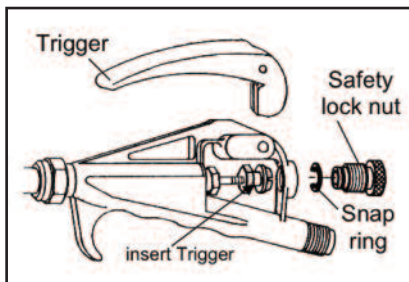
14

Attach the valve trigger by inserting it into the space between the Lock nut and Adjustment screw, then insert the Trigger screw.



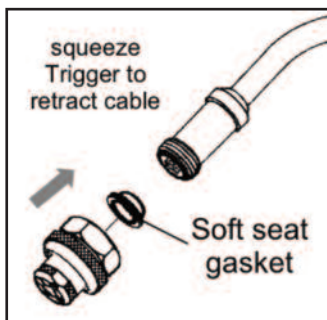
15

Screw the Safety lock nut into the valve body, and then attach the Snap ring.

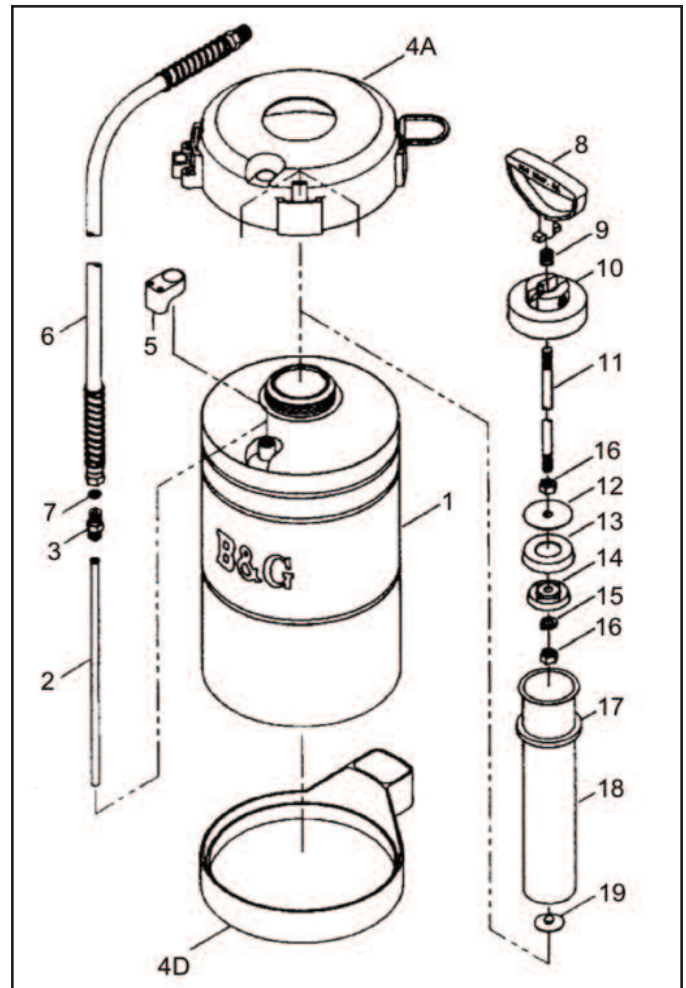


16

Attach the tip and nozzle to the end of the Extension, make certain the Soft seat gasket is facing correctly. The small end faces the Extension. Press the Trigger to retract the Seat stem into the Extension, then attach the tip and nozzle.

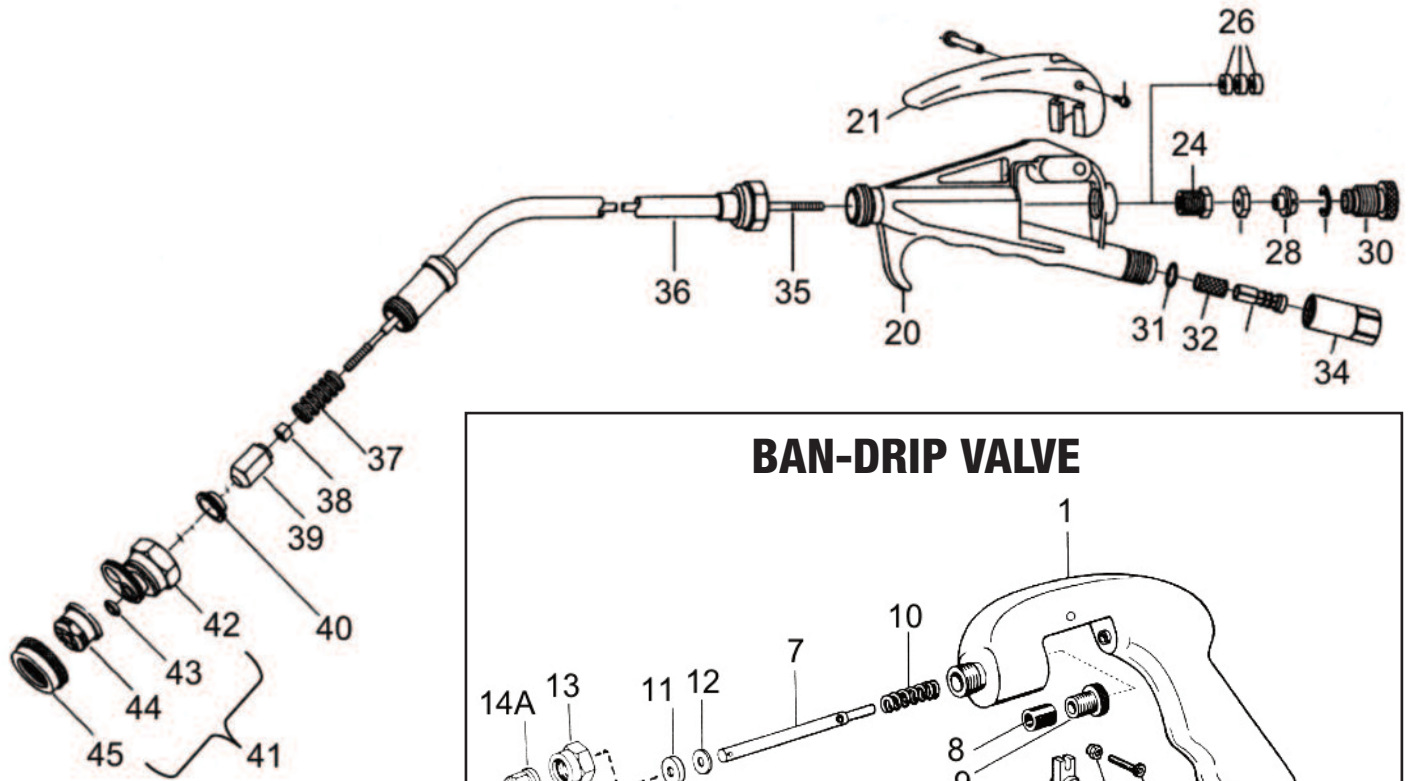


STAINLESS STEEL SPRAYER

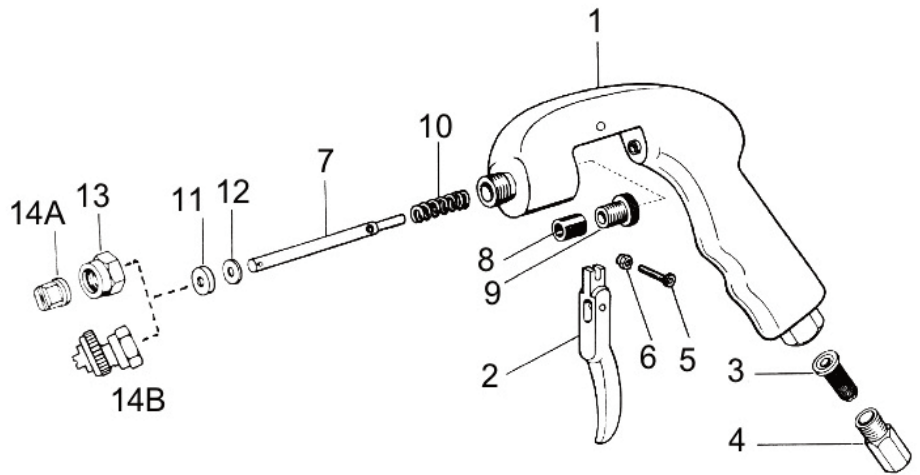


#	PART #	ORDER #	DESCRIPTION
1	T-50	22024800	Tank - 1/2 Gallon
	T-100	22025000	Tank - 1 Gallon
	T-200	22025100	Tank - 2 Gallon
	T-300	22025200	Tank - 3 Gallon
	T-500	22025250	Tank - 5 Liter
2	HS-297	22025600	Siphon tube - 1/2 Gallon
	OS-297	22025700	Siphon tube - 1 Gallon
	TS-297	22025800	Siphon tube - 2 Gallon
	THS-297-01	22025901	Siphon tube - 3 Gallon
	FS-297	22025950	Siphon tube - 5 Liter
3	HA-298	22025300	Adapter - hose
4A	TT-1	22049476	Tank top (1 Gallon)
4D	TB-1	22049477	Tank bottom
5	5700-H	22049475	Tip holder
6	D-50	22030100	Hose - 4 ft. red
7	D-51-P	22030400	Hose washer
8	P-275	22029800	Pump handle
9	P-276	22029900	Pump lock spring
10	P-274	22029700	Pump cap
11	PH-273	22029400	Plunger rod - 1/2 Gallon
	PO-273	22029500	Plunger rod - 1 Gallon
	PF-273	22029650	Plunger rod - 2 Gallon - 5 Liter
	PT-273	22029600	Plunger rod - 3 Gallon
12	P-272	22029200	Back plate
13	NP-277	22029000	Polypropylene cup
14	NP-270	22028600	Cup spreader plate
15	P-269A	22028400	Lock washer
16	P-269-SS	22028250	Plunger nut
17	P-268	22028000	Pump gasket
18	PH-267	22027400	Pump tube - 1/2 Gallon
	PO-267	22027500	Pump tube - 1 Gallon
	PF-267	22027650	Pump tube - 2 Gallon
	PT-267	22027600	Pump tube - 3 Gallon
19	PV-266	22027200	Check valve

EXTENDA-BAN VALVE



BAN-DRIP VALVE



EXTENDA-BAN VALVE

#	PART #	ORDER #	DESCRIPTION
20	VB-147	22044450	Valve body
21	VT-140	22042800	Valve trigger Kit
24	PN-150	22044900	Packing nut (stainless)
	PN-150-1	22042454	Packing nut (brass)
	PN-150-2	22042455	Packing nut (stainless steel)
26	VP-151	22045099	Valve packing washers
28	AS-148	22044500	Adjustment screw Kit
30	SL-162	22046700	Safety lock nut
34	SA-143	22043400	Strainer housing
31	NG-146	22044200	Nylon gasket
32	MS-145-50	22043800	Mesh strainer and support
35	VC-152	22045300	Valve cable, 9 in.
	VC-153	22045400	Valve cable, 18 in.
	VC-163	22045450	Valve cable, 24 in.
36	VE-154	22045500	Valve extension, 9 in.
	VE-155	22045600	Valve extension, 18 in.
	VE-164	22045650	Valve extension, 24 in.
	VE-154-SS*	22045510	Valve extension, 9 in.
	VE-155-SS	22045610	Valve extension, 18 in.
	VE-164-SS	22045710	Valve extension, 24 in.
37	VS-156	22045700	Seat stem spring
38	SSL-157	22045900	Seat stem nut
39	SS-158	22046100	Seat stem
40	SP-159	22046300	Soft seat gasket
41	5850-CC	22049466	Multeejet tip assembly
42	9751-M	22049300	Multeejet tip holder
43	4190	22034700	Gasket
44	5800-CC	22049467	Multeejet CC tip
45	4596	22034500	Tip retainer

BAN-DRIP VALVE

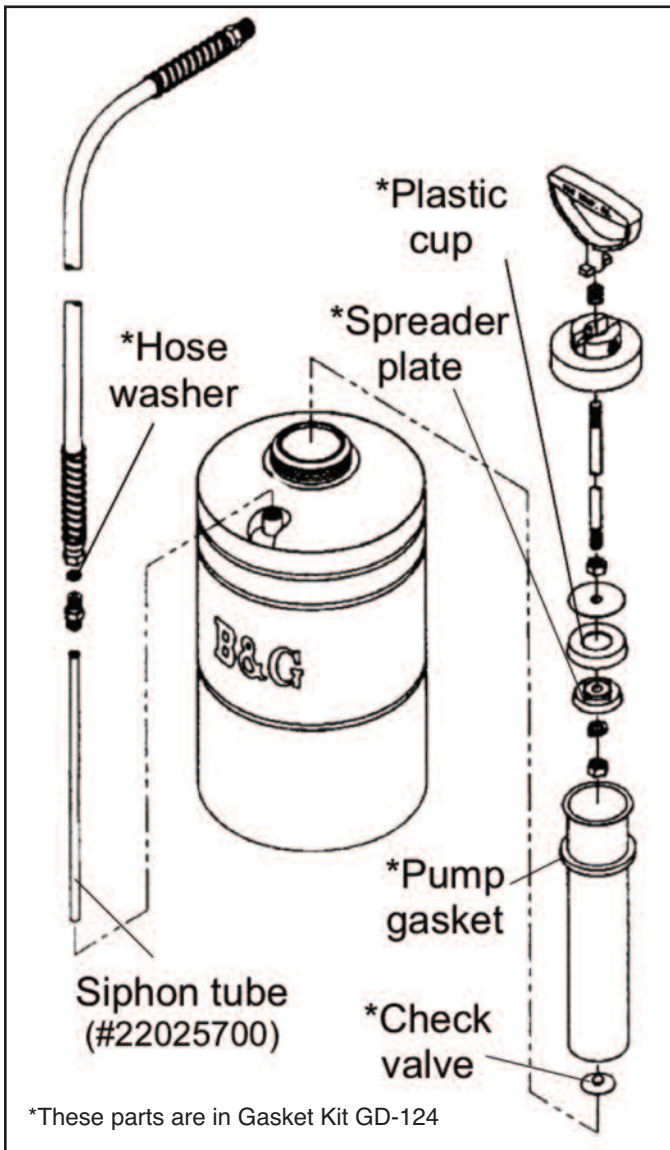
#	PART #	ORDER #	DESCRIPTION
1	VB-40	22039700	Valve body
2	VT-41	22039800	Valve trigger
3	SA-42	22039900	Mesh strainer
4	SB-43	22040100	Pipe thread strainer
5	TS-44	22040300	Trigger screw
6	TN-45	22040500	Trigger nut
7	VR-46	22040700	Valve rod and pin
8	PN-47	22040900	Brass packing nut
9	RP-48	22041100	Rod packing
10	RS-49	22041300	Rod spring
11	SGH-50	22041500	Seat gasket holder
12	TSG-51	22041700	Seat gasket
13	1325	22033100	Tip cap
14A	800067	22032100	Fine fan tip
14B	5850	22049451	Multeejet tip assembly



135 REGION SOUTH DRIVE • JACKSON, GA 30233
 Toll Free 800-544-8811 • Phone 678-688-5601
 www.bgequip.com • Fax 678-688-5633

*Stainless Steel

TANK SPRAYER PROBLEMS AND SOLUTIONS



Problem: Tank is not holding pressure; pump is working but no pressure remains in the tank.

Solution: Check Pump gasket, replace if cracked.

Problem: Tank is not getting pressure; the pump seems to be working but no pressure builds in the tank.

Solution: Grease Plastic cup in pump tube, or replace cup and Spreader Plate.

Problem: Pump cylinder fills with liquid, pumping is difficult.

Solution: Clean dirt from bottom of pump tube, replace Check valve at bottom.

Problem: Won't spray; tank holds pressure but there is no spray from the nozzle, **a new sprayer**.

Solution: Replace Hose washer, it may have been damaged when hose was attached to tank; the junction may have been over-tightened!

Problem: Tank holds pressure, but there is no spray from nozzle (**old sprayer**).

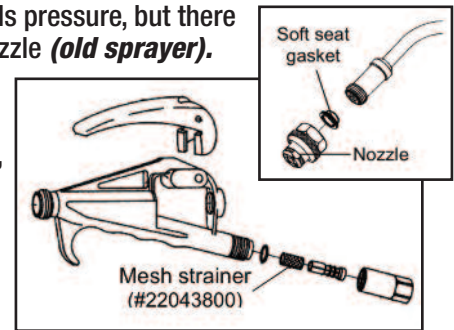
Solution:

(1) Siphon tube is clogged or cracked, it must be cleaned or replaced.

(2) Clean the mesh Strainer at the end of the hose near the valve.

(3) Clean the nozzle with a small brush.*

(4) Clean or replace Soft seat gasket at the end of the extension.



Problem: Valve is leaking around the Packing nut, and the handle is wet.

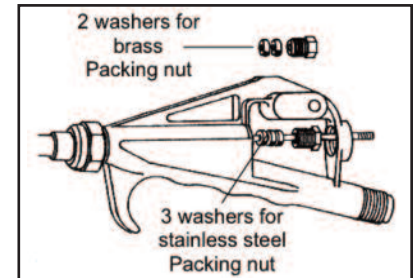
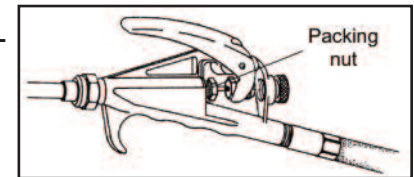
Solution:

(1) Tighten the Packing nut.

(2) Replace the valve Packing washers.

2 washers with brass Packing nut

3 washers with stainless steel Packing nut



Problem: Extension is leaking at the tip, a constant drip from the tip.

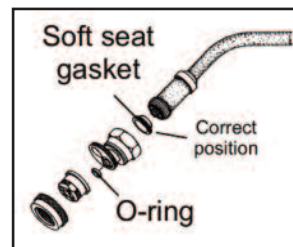
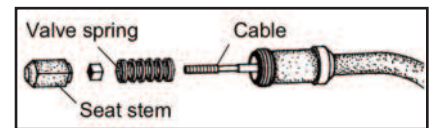
Solution:

(1) Clean or replace nozzle O-ring.

(2) Clean end of Seat stem.

(3) Clean or replace Soft seat gasket.

(4) Replace the Valve spring.



Problem: Hose is leaking at the connection with the tank; leaks when tank is pressurized.

Solution: Replace the Hose washer at the end of the hose; do not over-tighten the connection when reconnecting the hose to the tank.

